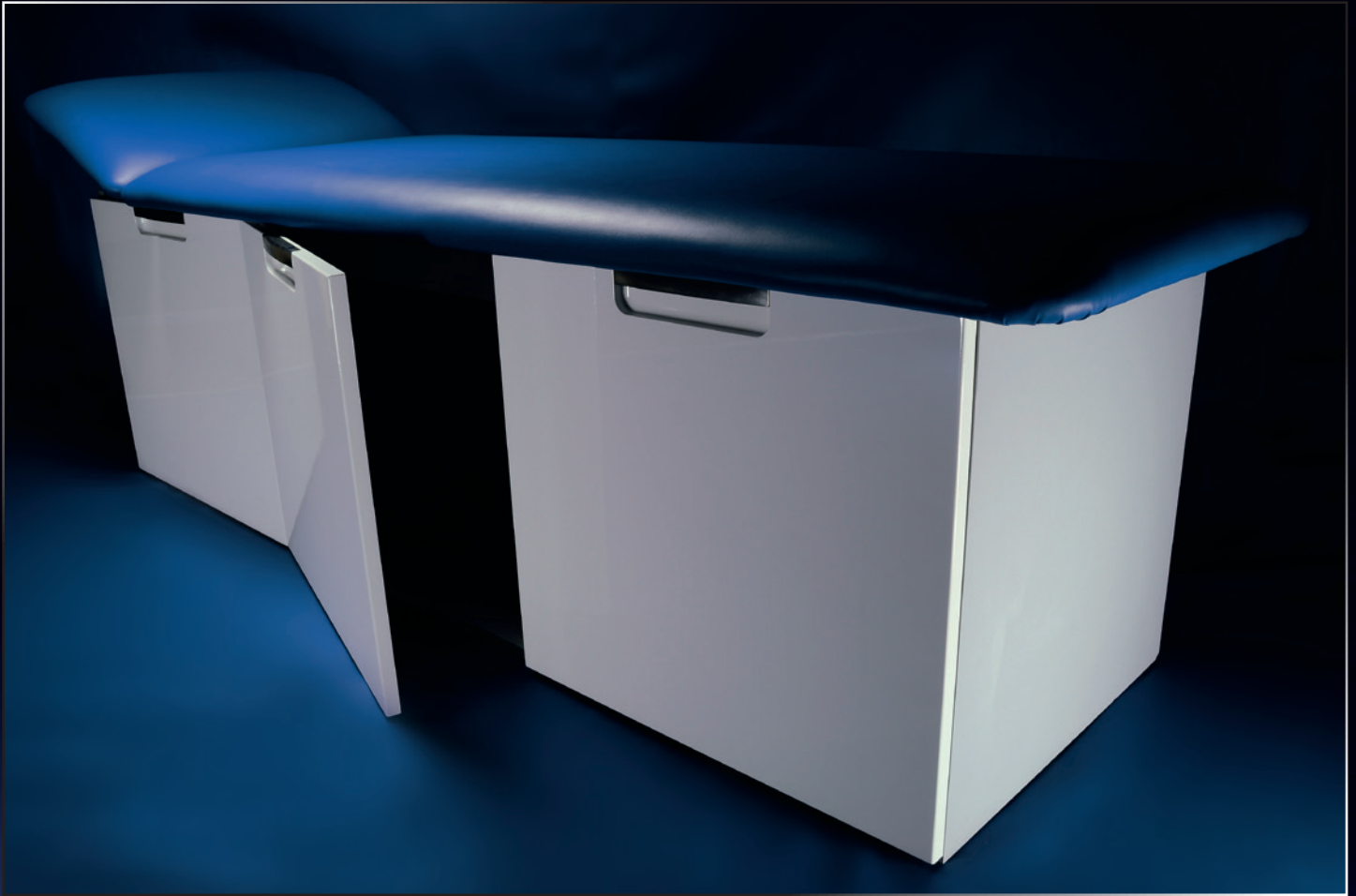


# GOLEM

**GOLEM 1SK Code Nr. G 01 05**  
**Table with storage space**



A multifunctional table for every surgery with a box under the operating surface. Two-segment operating surface with dimensions of 700 × 2000 mm without a nose slot, with a head segment manually adjustable between 0° to +40°. The height is 600 mm, upholstery colour by request. The light grey laminate box has 3 separate doors with high-gloss white surface and stainless steel grips.

The head segment can be located on the left or on the right side of the table from the operator's view.

The weight of the table is 50 kg, carrying capacity: 150 kg.

#### **Accessories:**

Paper roll holder under the head

Code Nr. D 01 04